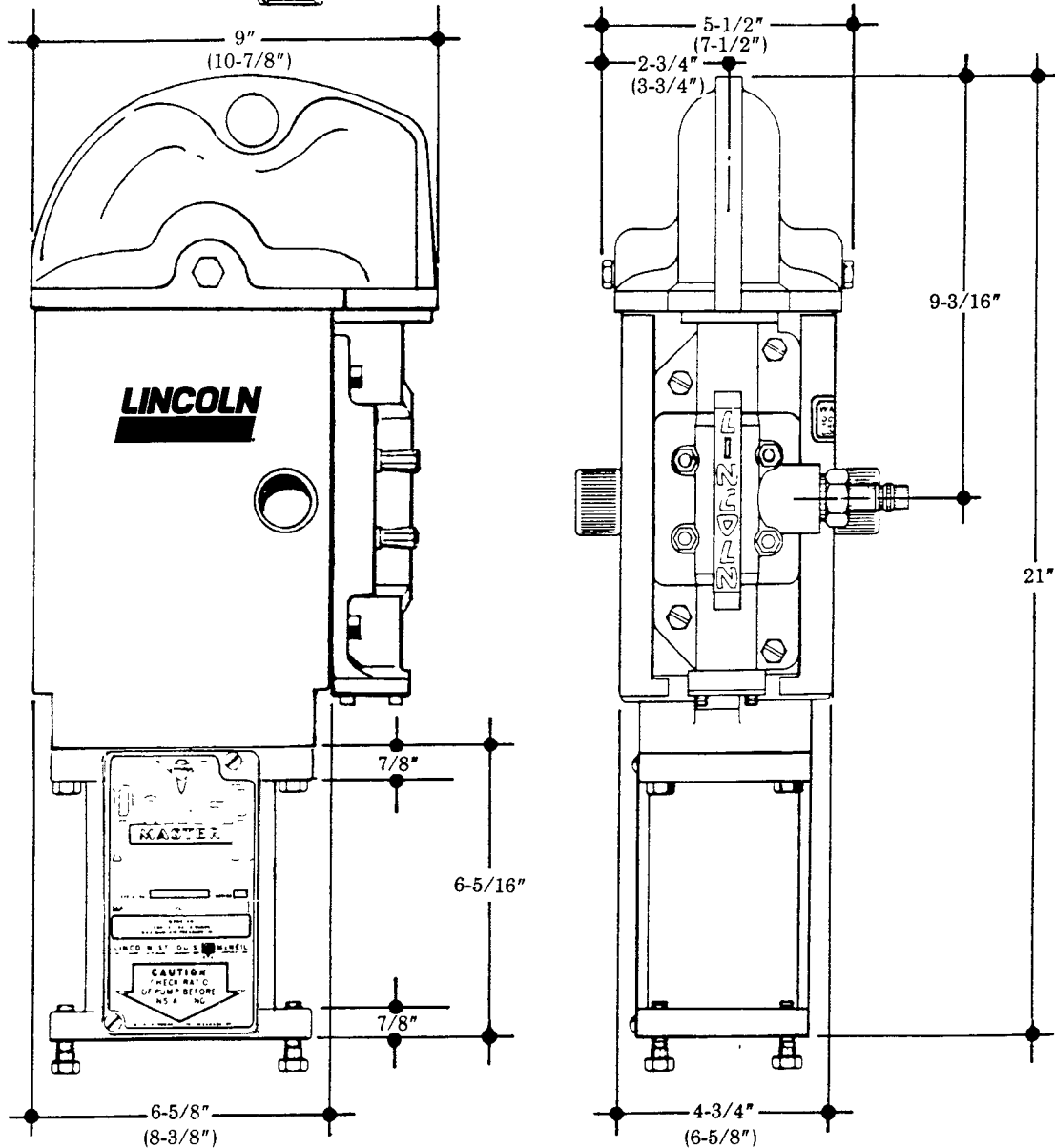
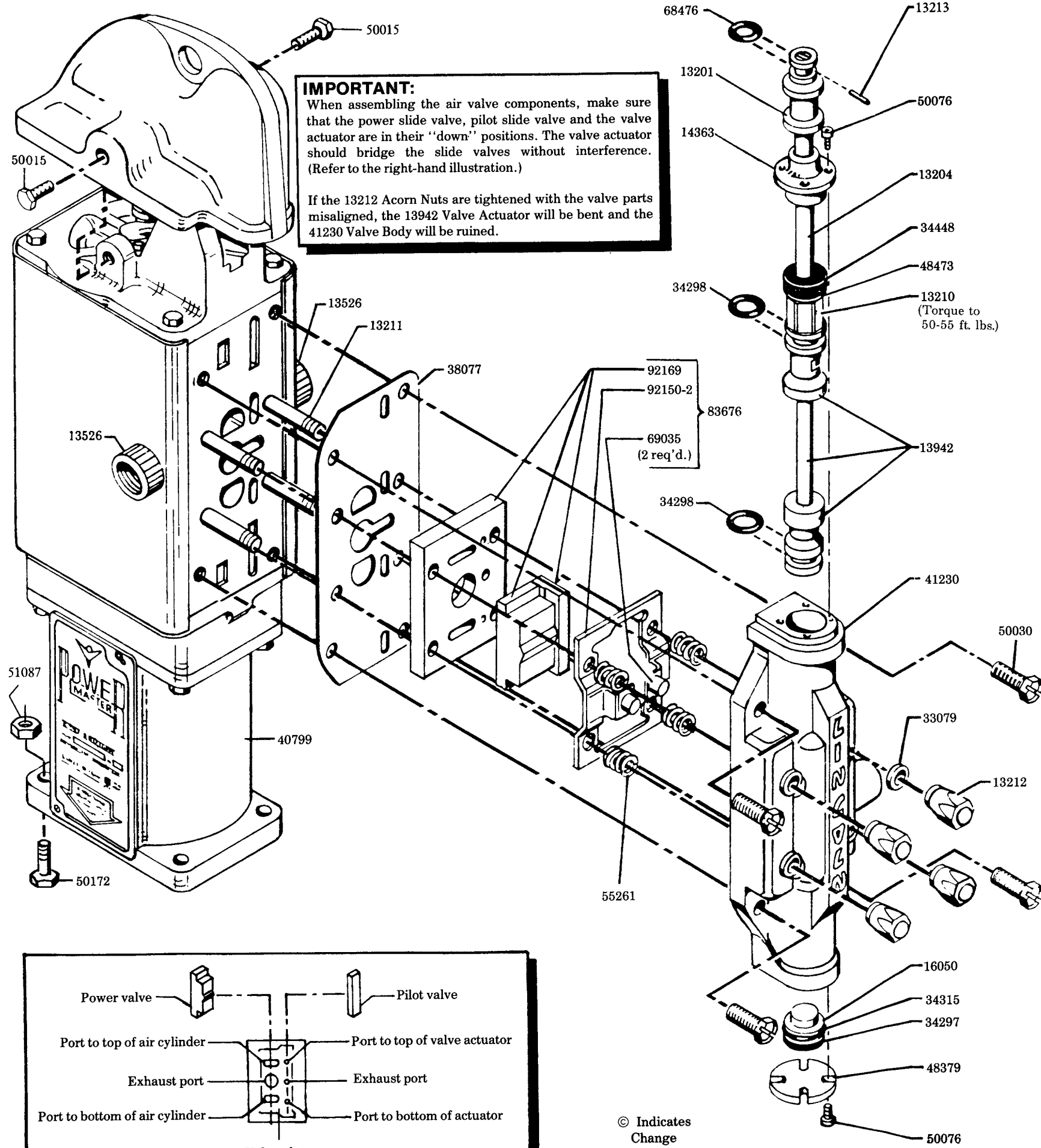


**WARNING**  
DO NOT OPERATE  
WITH COMBUSTIBLE GAS

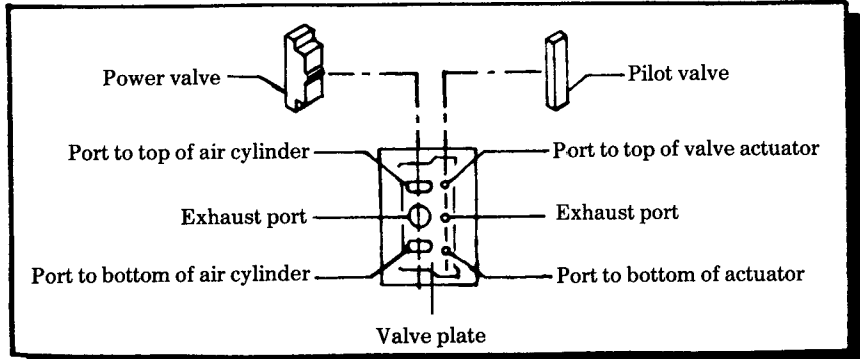
NOTE: 82736 dimensions are given in parentheses.





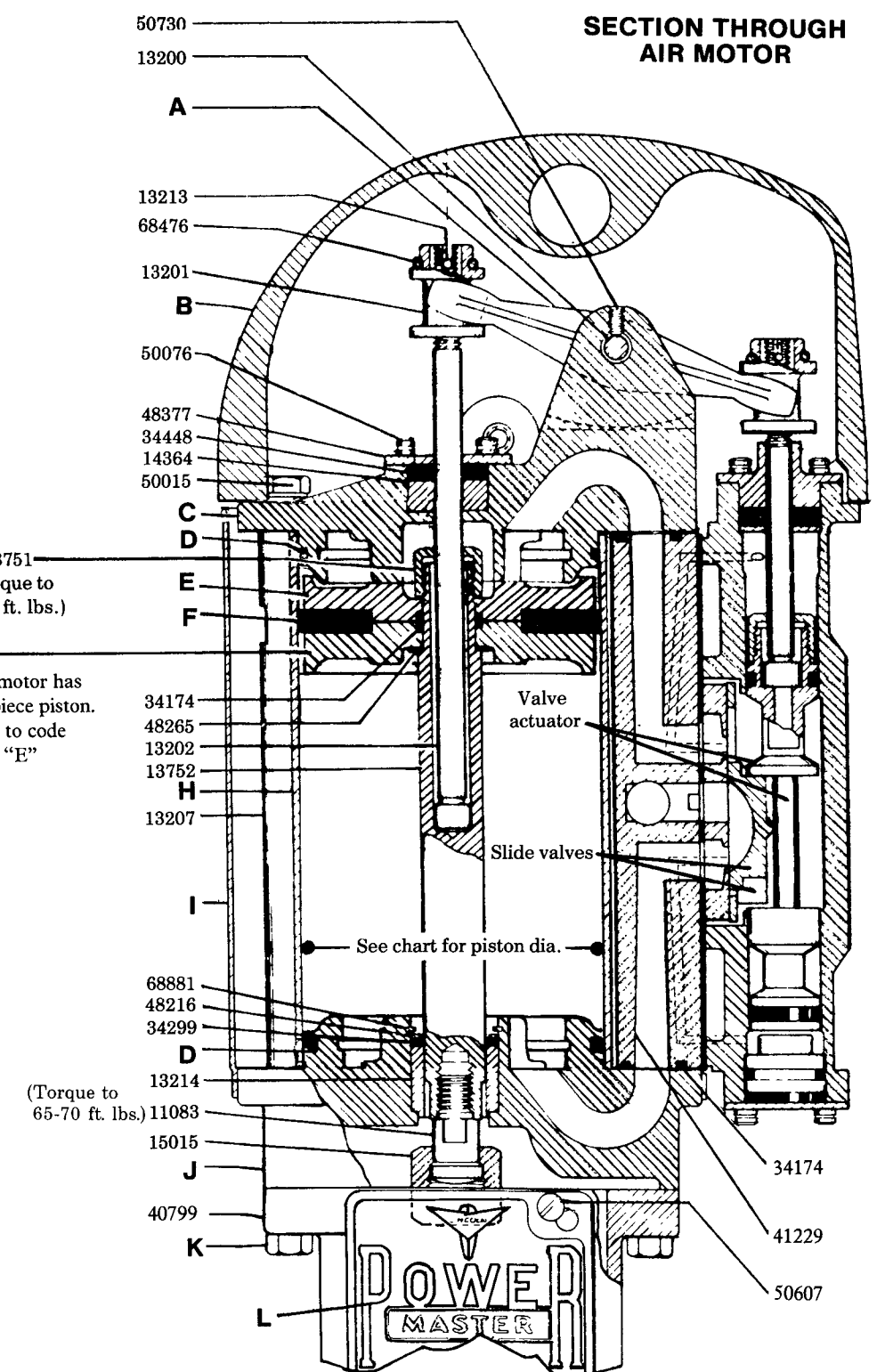
**IMPORTANT:**  
 When assembling the air valve components, make sure that the power slide valve, pilot slide valve and the valve actuator are in their "down" positions. The valve actuator should bridge the slide valves without interference. (Refer to the right-hand illustration.)

If the 13212 Acorn Nuts are tightened with the valve parts misaligned, the 13942 Valve Actuator will be bent and the 41230 Valve Body will be ruined.



**POWER & PILOT VALVES & AIR PASSAGE PORTS IN VALVE PLATE**

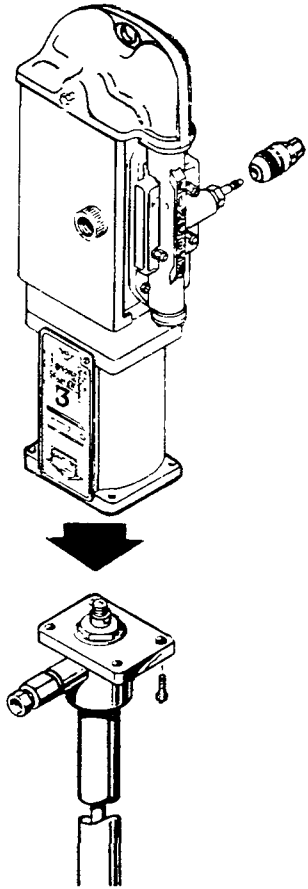
© Indicates Change



| Code | Description         | Piston diameter |        |        |
|------|---------------------|-----------------|--------|--------|
|      |                     | 3"              | 4-1/4" | 6"     |
| A    | Rocker arm          | 13203           | 13203  | 13218  |
| B    | Cover               | 40426           | 40426  | 40429  |
| C    | Upper cylinder head | 40797           | 40782  | 40428  |
| D    | O-ring (Buna-N)     | 34351           | 34295  | 34455  |
| E    | Piston              | 40433           | 41228  | 40616  |
| F    | D-packing (Buna-N)  | 34321           | 34294  | 34503  |
| G    | Piston              | 40433           | 41228  | —      |
| H    | Air cylinder        | 61603           | 61425  | 61435  |
| I    | Sleeve              | 360313          | 360313 | 360320 |
| J    | Lower cylinder head | 40796           | 40783  | 40524  |
| K    | Screw               | 50124           | 50124  | 50123  |
| L    | Serial plate        | 65240           | 65239  | 65241  |

## ATTACHING AIR MOTOR TO PUMP TUBE

- 1 — Tightly connect airmotor coupling nut to the pump plunger.
- 2 — Attach airmotor to the pump outlet body flange with the four bolts & nuts (hand tight) supplied with airmotor.
- 3 — Slowly cycle the pump several times, using just enough air pressure to operate the pump without stalling.
- 4 — Stop the pump on an "up" stroke and tighten the four bolts & nuts to securely fasten the airmotor to the pumptube.



## SERVICE PARTS

| Qty. | Part  | Description     | Qty. | Part  | Description              | Qty. | Part    | Description       |
|------|-------|-----------------|------|-------|--------------------------|------|---------|-------------------|
| 1    | 11083 | Coupling stud   | 1    | 15015 | Coupling nut             | 1    | 48473   | Washer            |
| 1    | 13200 | Pin             | 1    | 16050 | Spacer                   | *6   | 50015   | Screw             |
| 2    | 13201 | Trip rod collar | 4    | 33079 | Gasket                   | 4    | 50030   | Screw             |
| 1    | 13202 | Trip rod        | 3    | 34174 | O-ring                   | 12   | 50076   | Screw             |
| 1    | 13204 | Trip rod        | 1    | 34297 | Packing                  | 4    | 50172   | Bolt              |
| 2    | 13207 | Tie rod         | 2    | 34298 | Packing                  | 2    | 50607   | Screw             |
| 1    | 13210 | Trip rod stop   | 1    | 34299 | Packing                  | 2    | 50730   | Screw             |
| 4    | 13211 | Stud            | 1    | 34315 | O-ring                   | 4    | 51087   | Nut               |
| 4    | 13212 | Acorn nut       | 2    | 34448 | Packing                  | 4    | 55261   | Valve seat spring |
| 2    | 13213 | Pin             | 1    | 38077 | Valve gasket             | 2    | 68476   | Retaining ring    |
| 1    | 13214 | Spacer          | 1    | 40799 | Airmotor support casting | 1    | 68881   | Retaining ring    |
| 2    | 13526 | Adapter         | 1    | 41229 | Support                  | 2    | 69035   | Catch             |
| 1    | 13751 | Trip rod stop   | 1    | 41230 | Valve body               | 1    | 92150-2 | Guide plate       |
| 1    | 13752 | Piston rod      | 1    | 48216 | Washer                   | 1    | 92169   | Valves & seat     |
| 1    | 13942 | Valve actuator  | 1    | 48265 | Washer                   | 1    | 650112  | Nipple            |
| 1    | 14363 | Trip rod guide  | 1    | 48377 | Washer                   | 1    | 652008  | Socket            |
| 1    | 14364 | Trip rod guide  | 1    | 48379 | Washer                   | 1    | 652012  | Socket            |

\*10 required on 82736-6" Airmotor.

### RETAIN THIS INFORMATION FOR FUTURE REFERENCE

When ordering replacement parts, list: Part Number, Description, Model Number, and Series Letter.

LINCOLN provides a Distributor Network that stocks equipment and replacement parts.